

ISOMAX

E6 EarSet

The E6 EarSet is a truly revolutionary combination of beautiful form and outstanding sound in a package so small it's all but invisible



Nothing else even comes close

Product Name	Part#	User Price
E6 EarSet Hardwired	E6OP5T	\$514.60

Applications: When you need a nearly invisible headset mike for clergy, stage performance, trade show presenters, auctioneers, teachers, lecturers.

Features: Very high quality audio, good rejection of feedback and unwanted sounds. extremely light and stable on the head. Available in Light Beige, Tan, Cocoa and Black colors. High Frequency response can be adjusted by changing the provided protective caps. Detachable cable is easy to replace.

Supplied with: Belt clip and windscreen.

How to specify E6 EarSet Microphone options: E6OP[][] — Color: L = Light Beige T = Tan
C = Cocoa B = Black

Sensitivity: 5 for normal speaking, 6 for theater, 7 for very loud vocals

E6 EarSet Microphone Accessories:

Product Name	Part#	User Price
E6 Standard Round Windscreen	E6WSR []	\$8.44
E6 cable clip	E6CLIP []	\$15.34
E6 Protective cap	E6CAP [][]	\$10.25

H.F. Boost: 0 = Flat, 4 = +4 dB
8 = +8 dB @ 15 kHz

Color: L = Light Beige T = Tan C = Cocoa B = Black

See Page B for E6 EarSets for wireless transmitters.

E6 EarSet Ultra light headset microphone for Wireless

Brand	Model	Connector type	Part #	User
AKG	PT60,61,80,81	Switchcraft TA3F	E6[]W[]J[]JAK	\$488.50
	PT51,300,900	B-LOC (3.5MM)	E6[]W[]J[]JAG	\$501.53
Altec		TA4F	E6[]W[]J[]JAA	\$488.50
Audio Limited	TX2000, RMS-2000-mxl	Lemo 6 pin	E6[]W[]J[]JAL	\$511.00
Audio Technica	T27, 31, 35, 51	Hirose 4 pin	E6[]W[]J[]JAT	\$495.00
	T75	Hirose 4 pin	E6[]W[]J[]JAN	\$495.00
	PRO 88w/t	Special 3.5 mm plug	E6[]W[]J[]JAP	\$482.50
	ATW-U101	Switchcraft TA5F	E6[]W[]J[]JAW	\$488.50
Azden	41BT (UHF)	Hirose 4 pin	E6[]W[]J[]JZU	\$495.00
	WM-PRO, WLT-PRO	Non locking 3.5 mm	E6[]W[]J[]JZP	\$482.50
Beyer	All	Beyer 4 pin	E6[]W[]J[]JBS	\$501.53
Comtek	M-72	3.5 mm plug	E6[]W[]J[]JCS	\$482.50
	M-72	Switchcraft 851	E6[]W[]J[]JC2	\$482.50
	M-72	Switchcraft TA4M	E6[]W[]J[]JCS	\$488.50
	M-72	Lemo 4 pin	E6[]W[]J[]JCL	\$495.00
Electrovoice	MS-2000, MB2000A	Switchcraft TA4F	E6[]W[]J[]JEV	\$488.50
	MS-3000	Switchcraft TA4F	E6[]W[]J[]JET	\$488.50
HME	TX-550, TX822	Switchcraft TA4F	E6[]W[]J[]JHS	\$488.50
Lectrosomics	M170,175	Switchcraft 851	E6[]W[]J[]JL2	\$482.50
	M185,187 UM190,195,200,250,300	Switchcraft TA5F	E6[]W[]J[]JLS	\$488.50
	H185,187 UH190,195,200	Switchcraft A3M	E6[]W[]J[]JLX	\$482.50
Lightspeed	BP-200	Push lock type 4 pin	E6[]W[]J[]JLH	\$495.00
Micron	TX101, 102, 501, 502	Lemo Fc2308	E6[]W[]J[]JMC	\$517.00
	500.x, TX 703	Lemo Fc2308	E6[]W[]J[]JMX	\$517.00
Mipro	ACT707, MT801	Screw on 4 pin	E6[]W[]J[]JMN	\$495.00
	MT103, Mt808	B-LOC (3.5MM)	E6[]W[]J[]JM3	\$495.00
Nady	410LT,900LT	Lemo 4 pin	E6[]W[]J[]JNL	\$495.00
	101LT,201LT,501LT	Switchcraft TA3F	E6[]W[]J[]JNS	\$488.50
	650LT,701LT,1200LT	Switchcraft TA3F	E6[]W[]J[]JNS	\$488.50
Ramsa	WX-RB300	Twist lock type 4 pin	E6[]W[]J[]JRH	\$511.00
Sabine	SW16T, SW30T	Sabine 4 pin	E6[]W[]J[]JSB	\$495.00
	SW50T	Switchcraft TA4F	E6[]W[]J[]JSS	\$488.50
Samson	CT2,BT3,UT4, TX3 (Gray)	Hirose 6 pin	E6[]W[]J[]JSA	\$495.00
	UT5, TX3 (Black)	Hirose 6 pin	E6[]W[]J[]JSX	\$495.00
	CT3, VT2L	Switchcraft TA3F	E6[]W[]J[]JSV	\$488.50
Sennheiser	SK2012	Microdot	E6[]W[]J[]JSE	\$511.00
	SK-50, SK250	Lemo 3 pin	E6[]W[]J[]JS3	\$511.00
	BF1083	Lemo 1 pin	E6[]W[]J[]JS1	\$511.00
	EW 100,300,500	3.5 mm locking plug	E6[]W[]J[]JSD	\$495.00
Shure	L-1, L-11,LX1,SC1,U1,T1	Switchcraft TA4F	E6[]W[]J[]JSL	\$488.50
	U1L	Lemo 4 pin	E6[]W[]J[]JSU	\$495.00
Sony	WRT-28, 420, 820	Twist lock type 4 pin	E6[]W[]J[]JSO	\$511.00
	WRT-805	3.5 mm locking plug	E6[]W[]J[]JSN	\$495.00
Telex	WT50, 55, 60, 80	Switchcraft TA4F	E6[]W[]J[]JTS	\$488.50
	WT 200, 400	Lemo 4 pin	E6[]W[]J[]JTL	\$495.00
	WT 450	Lemo 4 pin	E6[]W[]J[]JTT	\$495.00
Toa	WM4310	Toa special 3.5 mm	E6[]W[]J[]JTO	\$482.50
	WM4300	Switchcraft TA4F	E6[]W[]J[]JTA	\$488.50
Vega	77, 677	Lemo 4 pin	E6[]W[]J[]JVL	\$495.00
	T23, 25, 37, 93, PRO-2, 2020	Switchcraft TA4F	E6[]W[]J[]JVS	\$488.50
Xwire	X905	Switchcraft TA3F	E6[]W[]J[]JXW	\$488.50
Pigtail leads	Stripped and tinned	For 2 wire10k ohm	E6[]W[]J[]JNC	\$469.00

How to specify Type E6 EarSet for wireless: **E6OW [] [] []** ← Insert connector code for your transmitter.

Sensitivity: 5 = +0 dB Standard for most uses
 6 = -10 dB Low (blue band) for theater
 7 = -20 dB Very low (purple band) very loud vocals

Color: B = Black, L = Light Beige
 T = Tan C = Cocoa

E6 EarSet cables

Brand	Model	Connector type	Part #	User
AKG	PT60,61,80,81	Switchcraft TA3F	E6CABLE[JAK	\$54.50
	PT51,300,900	B-LOC (3.5MM)	E6CABLE[JAG	\$67.53
Altec		TA4F	E6CABLE[JAA	\$54.50
Audio Limited	TX2000, RMS-2000-mxl	Lemo 6 pin	E6CABLE[JAL	\$77.00
Audio Technica	T27, 31, 35, 51	Hirose 4 pin	E6CABLE[JAT	\$61.00
	T75	Hirose 4 pin	E6CABLE[JAN	\$61.00
	PRO 88w/t	Special 3.5 mm plug	E6CABLE[JAP	\$48.50
	ATW-U101	Switchcraft TA5F	E6CABLE[JAW	\$54.50
Azden	41BT (UHF)	Hirose 4 pin	E6CABLE[JZU	\$61.00
	WM-PRO, WLT-PRO	Non locking 3.5 mm	E6CABLE[JZP	\$48.50
Beyer	All	Beyer 4 pin	E6CABLE[JBS	\$67.53
Comtek	M-72	3.5 mm plug	E6CABLE[JC3	\$48.50
	M-72	Switchcraft 851	E6CABLE[JC2	\$48.50
	M-72	Switchcraft TA4M	E6CABLE[JCS	\$54.50
	M-72	Lemo 4 pin	E6CABLE[JCL	\$61.00
Electrovoice	MS-2000, MB2000A	Switchcraft TA4F	E6CABLE[JEV	\$54.50
	MS-3000	Switchcraft TA4F	E6CABLE[JET	\$54.50
HME	TX-550, TX822	Switchcraft TA4F	E6CABLE[JHS	\$54.50
Lectrosanics	M170,175	Switchcraft 851	E6CABLE[JL2	\$48.50
	M185,187 UM190,195,200,250,300	Switchcraft TA5F	E6CABLE[JLS	\$54.50
	H185,187 UH190,195,200	Switchcraft A3M	E6CABLE[JLK	\$48.50
Lightspeed	BP-200	Push lock type 4 pin	E6CABLE[JLH	\$61.00
Micron	TX101, 102, 501, 502	Lemo Fc2308	E6CABLE[JMC	\$83.00
	500.x, TX 703	Lemo Fc2308	E6CABLE[JMX	\$83.00
Mipro	ACT707, MT801	Screw on 4 pin	E6CABLE[JMN	\$61.00
	MT103, Mt808	B-LOC (3.5MM)	E6CABLE[JM3	\$61.00
Nady	410LT,900LT	Lemo 4 pin	E6CABLE[JNL	\$61.00
	101LT,201LT,501LT	Switchcraft TA3F	E6CABLE[JNS	\$54.50
	650LT,701LT,1200LT	Switchcraft TA3F	E6CABLE[JNS	\$54.50
Ramsa	WX-RB300	Twist lock type 4 pin	E6CABLE[JRH	\$77.00
Sabine	SW16T, SW30T	Sabine 4 pin	E6CABLE[JSB	\$61.00
	SW50T	Switchcraft TA4F	E6CABLE[JSS	\$54.50
Samson	CT2,BT3,UT4, TX3 (Gray)	Hirose 6 pin	E6CABLE[JSA	\$61.00
	UT5, TX3 (Black)	Hirose 6 pin	E6CABLE[JSX	\$61.00
	CT3, VT2L	Switchcraft TA3F	E6CABLE[JSV	\$54.50
Sennheiser	SK2012	Microdot	E6CABLE[JSE	\$77.00
	SK-50, SK250	Lemo 3 pin	E6CABLE[JS3	\$77.00
	BF1083	Lemo 1 pin	E6CABLE[JS1	\$77.00
	EW 100,300,500	3.5 mm locking plug	E6CABLE[JSD	\$61.00
Shure	L-1, L-11,LX1,SC1,U1,T1	Switchcraft TA4F	E6CABLE[JSL	\$54.50
	U1L	Lemo 4 pin	E6CABLE[JSU	\$61.00
Sony	WRT-28, 420, 820	Twist lock type 4 pin	E6CABLE[JSO	\$77.00
	WRT-805	3.5 mm locking plug	E6CABLE[JSN	\$61.00
Telex	WT50, 55, 60, 80	Switchcraft TA4F	E6CABLE[JTS	\$54.50
	WT 200, 400	Lemo 4 pin	E6CABLE[JTL	\$61.00
	WT 450	Lemo 4 pin	E6CABLE[JTT	\$61.00
Toa	WM4310	Toa special 3.5 mm	E6CABLE[JTO	\$48.50
	WM4300	Switchcraft TA4F	E6CABLE[JTA	\$54.50
Vega	77, 677	Lemo 4 pin	E6CABLE[JVL	\$61.00
	T23, 25, 37, 93, PRO-2, 2020	Switchcraft TA4F	E6CABLE[JVS	\$54.50
Xwire	X905	Switchcraft TA3F	E6CABLE[JXW	\$54.50
Pigtail leads	Stripped and tinned	For 2 wire 2k ohm	E6CABLE[JNC	\$35.00

How to specify Type E6 EarSet cables: E6CABLE [] [] ← Insert connector code for your transmitter.

Color: B = Black, L = Light Beige
T = Tan C = Cocoa

D.I. BOXES



Product Name	Part#	User
TYPE 85 D.I. BOX	DT85	\$231.70

Applications: For directly connecting pickups and electronic instruments to microphone inputs.

Features: Eliminates loading problems - Phantom or battery power with automatic switching - Can isolate round on Phantom power - All class A circuits for ultra low distortion - Fully protected for RF interference and static discharge

PODIUM MICROPHONES



Product Name	Part#	User
ISOMAX 4 (Black)	M4HP5VS18EB	\$437.70
ISOMAX 4 (White)	M4HP5VS18EW	\$463.45

Applications: Outstanding performance on a lectern, pulpit, board table or witness stand.

Features: The ISOMAX 4 comes with Active Vibration Isolation. NO SHOCK MOUNTS NEEDED!

Supplied with: Windscreen and storage tube.

How to specify ISOMAX 4 options: M4 [] P5VS [] [] [] [] [] — B=Black W=White

Directional Pattern

- H=Hypercardioid (most popular)
- C=Cardioid
- O=Omnidirectional

Overall length including connector. Stock lengths are: 12", 18" (most popular) and 24"

Location of Flexible sections:

- E= Both Ends (most popular)
- T = Top flexible A = All flexible
- R = Rigid (can be bent by)
- B = Bottom flexible

Isomax 4 Podium Mike Accessories:

Product Name	Part#	User
Stand Clip for ISO 4	A4ST AND	\$31.98
Desk Mount for ISO 4	A4CDM	\$16.91
Windscreen	A4WSB	\$13.74

Choir Microphones



Product Name	Part#	User
ISOMAX 2 50' Cable	M2HP4FF50B	\$292.76

Applications: Hanging over choir, stage or audience. High quality mikes so small you don't notice them.

Features: Unusually uniform pickup over entire choir or production. Uses special cable that won't twist with temperature changes. Precision directional patterns are uniform with frequency

Supplied with: Windscreen, stiffener for hanging and Phantom powered preamplifier.

How to specify choir mike options: M2 [] P4FF50 []

Directional Pattern: H=Hypercardioid (most popular)
C=Cardioid O=Omnidirectional

B=Black W=White

Stage Microphones



Product Name	Part#	User
ISOMAX DBM	MBHP4FF50B	\$303.37

Applications: Theatrical footlight mike, plant mike for motion picture and TV production, podium or table mike.

Features: Provides better reach with more uniform gain over a larger area of stage. More gain before feedback with less audience and orchestra pickup.

Supplied with: Includes cable reel, adjustable stage mounting plate and phantom powered preamplifier.

CONFERENCE TABLE MICROPHONES



Product Name	Part#	User
EM301	M5OP5FF25	\$360.65

Applications: Conference tables and lecterns where the mike must be unobtrusive

Features: Mounts in the table edge, excellent audio quality, low vibration pickup and moisture resistant.

Supplied with: 25 foot cable with 3 pin male XLR plug

TVH HYPERCARDIOID LAVALIER MICROPHONE



Product Name	Part#	User
TVH	MTHP5LS05	\$406.80

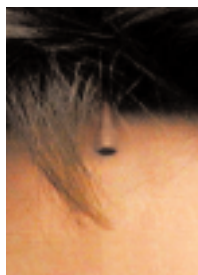
Applications: Excellent feedback control for live PA.

Features: Internal Active Vibration Isolation for exceptionally low handling noise.

Supplied with: Tie clip, wind screen, belt clip for connector and storage case.

See page 7 for TVH lavalier accessories.

B3 (.2" Dia. Round) OMNIDIRECTIONAL LAVALIER



Product Name	Part#	User
B3 HARDWIRED	B3P4FF05B	\$272.90

Applications: Hair mikes in theater, news anchors, interviews, lecturers, churches, schools and general lavalier applications.

Features: Highly water-resistant - low distortion at high SPL- available in five colors - field selectable H.F. response

Supplied with: Tie clip, wind screen, belt clip for connector and two H.F. response control protective caps.

See Page 3 for B3 microphones for use with wireless transmitters.

How to specify Type B3 Hardwired lavaliers **B3P [] FF05 []** — Color: B = Black, W = White, G = Gray
L = Light Beige, C = Cocoa

Sensitivity: 4 = -40 dB Standard Lavalier,
5 = -60 dB for musical instruments

B3 Lavalier Accessories:

Product Name	Part#	User
Single tie clip for B3	B3CLIP []	\$15.34
Double tie clip for B3	B3DCLIP []	\$22.45
Magnetic clip for B3	B3MCLIP []	\$17.70
Viper clip for B3	B3VCLIP []	\$13.74
Windscreen for B3	B3WS []	\$8.44
Protective cap for B3	B3CAP1 [] []	\$10.56

H.F. Boost: 0 = Flat
4 = +4 dB 8 = +8 dB @ 15 kHz

Color: B = Black, W = White, G = Gray
L = Light Beige, C = Cocoa

B3 (.2" Dia. Round) OMNIDIRECTIONAL LAVALIER for WIRELESS

Brand	Model	Connector type	Part #	User
AKG	PT60,61,80,81	Switchcraft TA3F	B3W[]FF05[]AK	\$244.06
	PT51,300,900	AKG B-LOC (3.5MM)	B3W[]FF05[]AG	\$257.09
Audio Limited	TX2000, RMS-2000-mxl	Lemo 6 pin	B3W[]FF05[]AL	\$266.56
Audio Technica	T27, 31, 35, 51	Hirose 4 pin	B3W[]FF05[]AT	\$252.31
	T75	Hirose 4 pin	B3W[]FF05[]AN	\$252.31
	PRO 88w/t	Special 3.5 mm plug	B3W[]FF05[]AP	\$254.56
	ATW-U101	Switchcraft TA5F	B3W[]FF05[]AW	\$244.06
Azden	41BT (UHF)	Hiroshi 4 pin	B3W[]FF05[]ZU	\$252.31
	WM-PRO, WLT-PRO	Non locking 3.5 mm	B3W[]FF05[]ZP	\$236.06
Beyer	TS600 and others	Beyer 4 pin	B3W[]FF05[]BS	\$257.09
Comtek	M-72	Non locking 3.5 mm	B3W[]FF05[]C3	\$238.06
	M-72	Switchcraft 851	B3W[]FF05[]C2	\$238.06
	M-72	Switchcraft TA4M	B3W[]FF05[]CS	\$244.06
	M-72	Lemo 4 pin	B3W[]FF05[]CL	\$250.56
Electrovoice	MS-2000, MB2000A	Switchcraft TA4F	B3W[]FF05[]EV	\$244.06
	MS-3000	Switchcraft TA4F	B3W[]FF05[]ET	\$244.06
HME	TX-550, TX822	Switchcraft TA4F	B3W[]FF05[]HS	\$244.06
Lectrosonics	M170,175	Switchcraft 851	B3W[]FF05[]L2	\$238.06
	M185,187 UM190,195,200,250,300	Switchcraft TA5F	B3W[]FF05[]LS	\$244.06
	H185,187 UH190,195,200	Switchcraft A3M	B3W[]FF05[]LX	\$238.06
Lightspeed	BP-200	Push lock type 4 pin	B3W[]FF05[]LH	\$252.31
Micron	TX 501, 502	Lemo Fc2308	B3W[]FF05[]MC	\$274.43
	TX 50X,X, TX 700	Lemo Fc2308	B3W[]FF05[]MX	\$274.43
Mipro	TLV2221	Mipro 4 pin	B3W[]FF05[]MN	\$250.56
Nady	410LT,900LT	Lemo 4 pin	B3W[]FF05[]NL	\$250.56
	101LT,201LT,501LT	Switchcraft TA3F	B3W[]FF05[]NS	\$244.06
	650LT,701LT,1200LT	Switchcraft TA3F	B3W[]FF05[]NS	\$244.06
Ramsa	WX-RB300	Twist lock type 4 pin	B3W[]FF05[]RH	\$266.56
Sabine	SW16T, SW30T	Sabine 4 pin	B3W[]FF05[]SB	\$250.56
Samson	CT2,BT3,UT4, TX3 (Gray)	Hirose 6 pin	B3W[]FF05[]SA	\$252.51
	UT5, TX3 (Black)	Hirose 6 pin	B3W[]FF05[]SX	\$252.51
	CT3, VT2L	Switchcraft TA3F	B3W[]FF05[]SV	\$244.06
Sennheiser	SK2012	Microdot	B3W[]FF05[]SE	\$266.56
	SK-50, SK250	Lemo 3 pin	B3W[]FF05[]S3	\$266.56
	SK-50, SK250 Padded 16dB	Lemo 3 pin	B3W[]FF05[]SP	\$266.56
	BF1083	Lemo 1 pin	B3W[]FF05[]S1	\$266.56
	SK 1090 Digital	3.5 mm plug	B3W[]FF05[]SD	\$254.56
Shure	L-1, L-11,LX1,SC1,U1,UC1,T1,UT1	Switchcraft TA4F	B3W[]FF05[]SL	\$244.06
	U1L	Lemo 4 pin	B3W[]FF05[]SU	\$250.56
Sony	WRT-28, 420, 820	Twist lock type 4 pin	B3W[]FF05[]SO	\$266.56
	WRT-805	Sony K1324 (3.5 mm)	B3W[]FF05[]SN	\$254.56
Telex	WT50, 55, 60, 80, Prostar	Switchcraft TA4F	B3W[]FF05[]TS	\$244.06
	WT 200, 400	Lemo 4 pin	B3W[]FF05[]TL	\$250.56
	WT 450	Lemo 4 pin	B3W[]FF05[]TT	\$250.56
Toa	WM370	Toa special 3.5 mm	B3W[]FF05[]TO	\$236.06
Vega	77, 677	Lemo 4 pin	B3W[]FF05[]VL	\$250.56
	T23, 25, 37, 93, PRO-2, 2020	Switchcraft TA4F	B3W[]FF05[]VS	\$244.06
Xwire	X905	Switchcraft TA3F	B3W[]FF05[]XW	\$244.06
Pigtail leads	Stripped and tinned	For 2 wire 10k ohm	B3W[]FF05[]NC	\$224.56

Insert connector code for your transmitter. ↓

How to specify Type B3 Lavalier for wireless: B3W [] FF05 [] []

Sensitivity: 4 = + 0 dB Standard (no band) for most uses
 5 = -10 dB Low (red band) head mike for theater

Color: B = Black, W = White, G = Gray
 L = Light Beige, C = Cocoa

B6 (.1" Dia. Round) OMNIDIRECTIONAL LAVALIER - Hardwired



Product Name	Part#	User
B6 - Hardwired	B6P4FF05B	\$434.60

Applications: Hidden in hair, costumes or glued on the face of actors in motion pictures and theater, news anchors, interviews, lecturers, churches, schools and general lavalier applications.

Features: Extremely small - hides in plain sight! Highly water resistant, low noise, available in five colors, field selectable H.F.response.

Supplied with: Tie clip, wind screen, belt clip for connector and three H.F.. response control protective caps.

See Page 5 for B6 lavaliers for wireless transmitters.

How to specify Type B6 Hardwired Lavalier options: B6P [] FF05 [] — Color: B = Black, W = White, G = Gray
L = Light Beige, C = Cocoa

Sensitivity: 4 = -40 dB Standard Lavalier,
5 = -60 dB for loud instruments

B6 Lavalier Accessories:

Product Name	Part#	User
Single tie clip for B6	B6CLIP	[] \$15.34
Double tie clip for B6	B6DCLIP	[] \$22.45
Magnetic clip for B6	B6MCLIP	[] \$17.70
Viper clip for B6	B6VCLIP	[] \$13.74
Windscreen for B6	B6WS []	\$8.44
Protective cap for B6 lavalier	B6CAP1 [] []	\$10.25

H.F.. Boost: 0 = Flat, 4 = +4 dB
8 = +8 dB @ 15 kHz

Color: B = Black, W = White, G = Gray
L = Light Beige, C = Cocoa

EMW (Square) OMNIDIRECTIONAL LAVALIER - Hardwired



Product Name	Part#	User
EMW - Hardwired	MEMWP4F05B	\$265.21

Applications: Best mike for hiding under clothing in motion picture and TV production. General purpose lavalier for churches, schools, interviews, news etc.

Features: Highly water resistant, very low rubbing noise, available in five colors and three H.F. responses

Supplied with: Viper grip pin on clip, tie clip, wind screen, belt clip for connector and soft case.

See Page 6 for EMW lavaliers for wireless transmitters.

How to specify Type EMW Hardwired Lavalier options: MEMWP4 [] 05 [] — Color: B = Black, W = White, G = Gray
L = Light Beige, C = Cocoa

H.F.. Response: F = Flat S = Shelved P = Peaked

EMW Lavalier Accessories:

Product Name	Part#	User
Single tie clip for EMW	AEMWCLIP	[] \$15.34
Double tie clip for EMW	AEMWDCLIP	[] \$22.45
Magnetic clip for EMW	AEMWMCLIP	[] \$17.70
Viper clip for EMW	AEMWVIPER []	\$13.74
Windscreen for EMW	B3WS []	\$8.44

Color: B = Black, W = White, G = Gray
L = Light Beige, C = Cocoa

B6 (.1" Dia. Round) OMNIDIRECTIONAL LAVALIER for WIRELESS

Brand	Model	Connector type	Part #	User
AKG	PT60,61,80,81	Switchcraft TA3F	B6W[]FF05[]AK	\$408.50
	PT51,300,900	AKG B-LOC (3.5MM)	B6W[]FF05[]AG	\$421.53
Audio Limited	TX2000, RMS-2000-mxl	Lemo 6 pin	B6W[]FF05[]AL	\$431.00
Audio Technica	T27, 31, 35, 51	Hirose 4 pin	B6W[]FF05[]AT	\$416.75
	T75	Hirose 4 pin	B6W[]FF05[]AN	\$416.75
	PRO 88w/t	Special 3.5 mm plug	B6W[]FF05[]AP	\$419.00
	ATW-U101	Switchcraft TA5F	B6W[]FF05[]AW	\$408.50
Azden	41BT (UHF)	Hiroshi 4 pin	B6W[]FF05[]ZU	\$416.75
	WM-PRO, WLT-PRO	Non locking 3.5 mm	B6W[]FF05[]ZP	\$400.50
Beyer	TS600 and others	Beyer 4 pin	B6W[]FF05[]BS	\$421.53
Comtek	M-72	Non locking 3.5 mm	B6W[]FF05[]C3	\$402.50
	M-72	Switchcraft 851	B6W[]FF05[]C2	\$402.50
	M-72	Switchcraft TA4M	B6W[]FF05[]CS	\$408.50
	M-72	Lemo 4 pin	B6W[]FF05[]CL	\$415.00
Electrovoice	MS-2000, MB2000A	Switchcraft TA4F	B6W[]FF05[]EV	\$408.50
	MS-3000	Switchcraft TA4F	B6W[]FF05[]ET	\$408.50
HME	TX-550, TX822	Switchcraft TA4F	B6W[]FF05[]HS	\$408.50
Lectrosanics	M170,175	Switchcraft 851	B6W[]FF05[]L2	\$402.50
	M185,187 UM190,195,200,250,300	Switchcraft TA5F	B6W[]FF05[]LS	\$408.50
	H185,187 UH190,195,200	Switchcraft A3M	B6W[]FF05[]LX	\$402.50
Lightspeed	BP-200	Push lock type 4 pin	B6W[]FF05[]LH	\$416.75
Micron	TX 501, 502	Lemo Fc2308	B6W[]FF05[]MC	\$438.87
	TX 50X.X, TX 700	Lemo Fc2308	B6W[]FF05[]MX	\$438.87
Mipro	TLV2221	Mipro 4 pin	B6W[]FF05[]MN	\$415.00
Nady	410LT,900LT	Lemo 4 pin	B6W[]FF05[]NL	\$415.00
	101LT,201LT,501LT	Switchcraft TA3F	B6W[]FF05[]NS	\$408.50
	650LT,701LT,1200LT	Switchcraft TA3F	B6W[]FF05[]NS	\$408.50
Ramsa	WX-RB300	Twist lock type 4 pin	B6W[]FF05[]RH	\$431.00
Sabine	SW16T, SW30T	Sabine 4 pin	B6W[]FF05[]SB	\$415.00
Samson	CT2,BT3,UT4, TX3 (Gray)	Hirose 6 pin	B6W[]FF05[]SA	\$416.95
	UT5, TX3 (Black)	Hirose 6 pin	B6W[]FF05[]SX	\$416.95
	CT3, VT2L	Switchcraft TA3F	B6W[]FF05[]SV	\$408.50
Sennheiser	SK2012	Microdot	B6W[]FF05[]SE	\$431.00
	SK-50, SK250	Lemo 3 pin	B6W[]FF05[]S3	\$431.00
	SK-50, SK250 Padded 16dB	Lemo 3 pin	B6W[]FF05[]SP	\$431.00
	BF1083	Lemo 1 pin	B6W[]FF05[]S1	\$431.00
	SK 1090 Digital	3.5 mm plug	B6W[]FF05[]SD	\$419.00
Shure	L-1, L-11,LX1,SC1,U1,UC1,T1,UT1	Switchcraft TA4F	B6W[]FF05[]SL	\$408.50
	U1L	Lemo 4 pin	B6W[]FF05[]SU	\$415.00
Sony	WRT-28, 420, 820	Twist lock type 4 pin	B6W[]FF05[]SO	\$431.00
	WRT-805	Sony K1324 (3.5 mm)	B6W[]FF05[]SN	\$419.00
Telex	WT50, 55, 60, 80, Prostar	Switchcraft TA4F	B6W[]FF05[]TS	\$408.50
	WT 200, 400	Lemo 4 pin	B6W[]FF05[]TL	\$415.00
	WT 450	Lemo 4 pin	B6W[]FF05[]TT	\$415.00
Toa	WM370	Toa special 3.5 mm	B6W[]FF05[]TO	\$400.50
Vega	77, 677	Lemo 4 pin	B6W[]FF05[]VL	\$415.00
	T23, 25, 37, 93, PRO-2, 2020	Switchcraft TA4F	B6W[]FF05[]VS	\$408.50
Xwire	X905	Switchcraft TA3F	B6W[]FF05[]XW	\$408.50
Pigtail leads	Stripped and tinned	For 2 wire 2k ohm	B6W[]FF05[]NC	\$389.00

Insert connector code for your transmitter.

How to specify Type B6 Lavalier for wireless: B6W [] FF05 [] []

Sensitivity: 4 = +0 dB Standard (gray band) for most uses
 5 = -10 dB Low (red band) head mike for theater
 6 = -20 dB Very low (blue band) mike near user's mouth

Color: B = Black, W = White, G = Gray
 L = Light Beige, C = Cocoa

EMW (Square) OMNIDIRECTIONAL LAVALIER for WIRELESS

Brand	Model	Connector type	Part #	User
AKG	PT60,61,80,81	Switchcraft TA3F	MEMW[]05[]AK	\$217.87
	PT51,300,900	AKG B-LOC (3.5MM)	MEMW[]05[]AG	\$230.90
Audio Limited	TX2000, RMS-2000-mxl	Lemo 6 pin	MEMW[]05[]AL	\$240.37
Audio Technica	T27, 31, 35, 51	Hirose 4 pin	MEMW[]05[]AT	\$226.12
	T75	Hirose 4 pin	MEMW[]05[]AN	\$226.12
	PRO 88w/t	Special 3.5 mm plug	MEMW[]05[]AP	\$228.37
	ATW-U101	Switchcraft TA5F	MEMW[]05[]AW	\$217.87
Azden	41BT (UHF)	Hiroshi 4 pin	MEMW[]05[]ZU	\$226.12
	WM-PRO, WLT-PRO	Non locking 3.5 mm	MEMW[]05[]ZP	\$209.87
Beyer	TS600 and others	Beyer 4 pin	MEMW[]05[]BS	\$230.90
Comtek	M-72	Non locking3.5 mm	MEMW[]05[]C3	\$211.87
	M-72	Switichcraft 851	MEMW[]05[]C2	\$211.87
	M-72	Switchcraft TA4M	MEMW[]05[]CS	\$217.87
	M-72	Lemo 4 pin	MEMW[]05[]CL	\$224.37
Electrovoice	MS-2000, MB2000A	Switchcraft TA4F	MEMW[]05[]EV	\$217.87
	MS-3000	Switchcraft TA4F	MEMW[]05[]ET	\$217.87
HME	TX-550, TX822	Switchcraft TA4F	MEMW[]05[]HS	\$217.87
Lectrosonics	M170,175	Switchcraft 851	MEMW[]05[]L2	\$211.87
	M185,187 UM190,195,200,250,300	Switchcraft TA5F	MEMW[]05[]LS	\$217.87
	H185,187 UH190,195,200	Switchcraft A3M	MEMW[]05[]LX	\$211.87
Lightspeed	BP-200	Push lock type 4 pin	MEMW[]05[]LH	\$226.12
Micron	TX 501, 502	Lemo Fc2308	MEMW[]05[]MC	\$248.24
	TX 50X.X, TX 700	Lemo Fc2308	MEMW[]05[]MX	\$248.24
Mipro	TLV2221	Mipro 4 pin	MEMW[]05[]MN	\$224.37
Nady	410LT,900LT	Lemo 4 pin	MEMW[]05[]NL	\$224.37
	101LT,201LT,501LT	Switchcraft TA3F	MEMW[]05[]NS	\$217.87
	650LT,701LT,1200LT	Switchcraft TA3F	MEMW[]05[]NS	\$217.87
Ramsa	WX-RB300	Twist lock type 4 pin	MEMW[]05[]RH	\$240.37
Sabine	SW16T, SW30T	Sabine 4 pin	MEMW[]05[]SB	\$224.37
Samson	CT2,BT3,UT4, TX3 (Gray)	Hirose 6 pin	MEMW[]05[]SA	\$226.32
	UT5, TX3 (Black)	Hirose 6 pin	MEMW[]05[]SX	\$226.32
	CT3, VT2L	Switchcraft TA3F	MEMW[]05[]SV	\$217.87
Sennheiser	SK2012	Microdot	MEMW[]05[]SE	\$240.37
	SK-50, SK250	Lemo 3 pin	MEMW[]05[]S3	\$240.37
	SK-50, SK250 Padded 16dB	Lemo 3 pin	MEMW[]05[]SP	\$240.37
	BF1083	Lemo 1 pin	MEMW[]05[]S1	\$240.37
	SK 1090 Digital	3.5 mm plug	MEMW[]05[]SD	\$228.37
Shure	L-1, L-11,LX1,SC1,U1,UC1,T1,UT1	Switchcraft TA4F	MEMW[]05[]SL	\$217.87
	U1L	Lemo 4 pin	MEMW[]05[]SU	\$224.37
Sony	WRT-28, 420, 820	Twist lock type 4 pin	MEMW[]05[]SO	\$240.37
	WRT-805	Sony K1324 (3.5 mm)	MEMW[]05[]SN	\$228.37
Telex	WT50, 55, 60, 80, Prostar	Switchcraft TA4F	MEMW[]05[]TS	\$217.87
	WT 200, 400	Lemo 4 pin	MEMW[]05[]TL	\$224.37
	WT 450	Lemo 4 pin	MEMW[]05[]TT	\$224.37
Toa	WM370	Toa special 3.5 mm	MEMW[]05[]TO	\$209.87
Vega	77, 677	Lemo 4 pin	MEMW[]05[]VL	\$224.37
	T23, 25, 37, 93, PRO-2, 2020	Switchcraft TA4F	MEMW[]05[]VS	\$217.87
Xwire	X905	Switchcraft TA3F	MEMW[]05[]XW	\$217.87
Pigtail leads	Stripped and tinned	For 3 wire operation	MEMW[]05[]NC	\$198.37

Insert connector code for your transmitter.

How to specify Type EMW Lavalier for wireless: MEMW [] 05 [] [] []

H.F. Response: F = Flat S = Shelved, P = Peaked

Color: B = Black, W = White, G = Gray
L = Light Beige, C = Cocoa

HEADSET MICROPHONES - Hardwired



Product Name	Part#	User
ISOMAX HEADSET	MHHP6HH05	\$307.92

Applications: On stage performance and recording, trade show presenters, clergy, auctioneers, teachers, lecturers

Features: Very high quality audio, high rejection of feedback and unwanted sounds, light and stable on the head. Available in Black and Light Beige colors.

Supplied with: Belt clip and switch on XLR connector, windscreen.



Product Name	Part#	User
ISOMAX BOOM MIKE	MBHP6HH05	\$306.89

Applications: Broadcast quality voice pickup in noisy locations, sports casters, and voice-overs for TV,

Features: Mounts easily on most headphones. Very high quality audio, high rejection of feedback and unwanted sounds. Looks attractive on camera. Available in Black and Light Beige colors.

Supplied with: Belt clip and switch on XLR connector, windscreen, headphone clips.

See Page 8 for Headsets for wireless transmitters.

How to specify Headset Microphone options: M [] [] P6HH05 [] — Color: B = Black, L = Light Beige

B = for mounting on headphones H = Worn on head

H = Hypercardioid (most popular)
C = Cardioid O = Omni

HEADSET MICROPHONE Accessories:

Product Name	Part#	User
Headset Standard Oval Windscreen	HSWSO []	\$10.56
Headset Larger Round Windscreen	HSWSR []	\$10.56

Color: B = Black, L = Light Beige

Miscellaneous

Product Name	Part#	User
Battery Power Module	AXBPM	\$1 11.34
Belt Clip	ABCBELCLP	\$13.74
TVH Single Tie Clip	AHSINCLP	\$17.71
TVH Double Tie Clip	AHDOUCLP	\$22.45
TVH Wind screen	A THWS	\$10.56
EM301 Capsule	M5OP5FFLE	\$282.15
TVH / ISO4 Capsule	MTHP5VSLE	\$307.61
TVH /ISO4 PC Card	MTHP5EMOD	\$159.08
TYPE 85 Module	DTM85	\$159.08
ISO2 Capsule	M2 [] P6FFLE	\$204.90

Directional Pattern: H = Hyper C = Cardioid O = Omni B = Bi

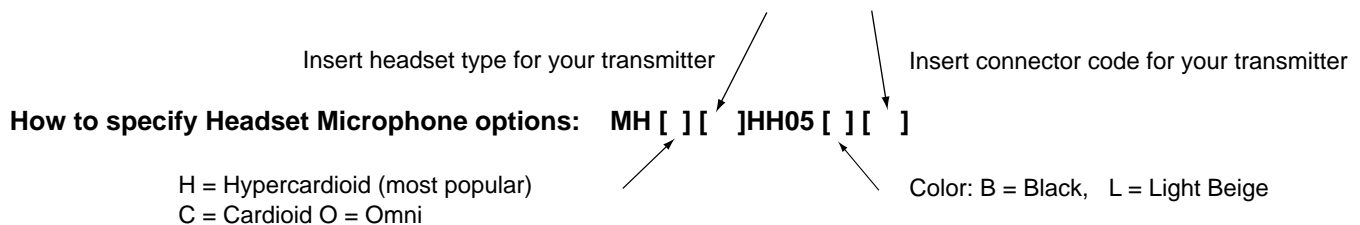
ISO2 PC Card M2 [] P	[] MOD	\$137.87
-----------------------	---------	----------

Directional Pattern: H = Hypercardioid
C = Cardioid O = Omni B = Bidirectional

Sensitivity: 4 = -40 dB out @ 1 Pascal for far field applications like choir mikes
6 = -60 dB out @ 1 Pascal for loud applications like miking instruments

HEADSET MICROPHONES for WIRELESS

Brand	Model	Connector type	Part #	User
AKG	PT60,61,80,81	Switchcraft TA3F	MH[]W3HH05[]AK	\$318.15
	PT51,300,900	AKG B-LOC (3.5MM)	MH[]W3HH05[]AG	\$331.18
Audio Limited	TX2000, RMS-2000-mxl	Lemo 6 pin	MH[]W5HH05[]AL	\$340.65
Audio Technica	T27, 31, 35, 51	Hirose 4 pin	MH[]W5HH05[]AT	\$326.40
	T75	Hirose 4 pin	MH[]W5HH05[]AN	\$326.40
	PRO 88w/t	Special 3.5 mm plug	MH[]W5HH05[]AP	\$328.65
	ATW-U101	Switchcraft TA5F	MH[]W5HH05[]AW	\$318.15
Azden	41BT (UHF)	Hiroshi 4 pin	MH[]W5HH05[]ZU	\$326.40
	WM-PRO, WLT-PRO	Non locking 3.5 mm	MH[]W5HH05[]ZP	\$310.15
Beyer	TS600 and others	Beyer 4 pin	MH[]W5HH05[]BS	\$331.18
Comtek	M-72	Non locking 3.5 mm	MH[]W5HH05[]C3	\$312.15
	M-72	Switchcraft 851	MH[]W5HH05[]C2	\$312.15
	M-72	Switchcraft TA4M	MH[]W5HH05[]CS	\$318.15
	M-72	Lemo 4 pin	MH[]W5HH05[]CL	\$324.65
Electrovoice	MS-2000, MB2000A	Switchcraft TA4F	MH[]W5HH05[]EV	\$318.15
	MS-3000	Switchcraft TA4F	MH[]W5HH05[]ET	\$318.15
HME	TX-550, TX822	Switchcraft TA4F	MH[]W5HH05[]HS	\$318.15
Lectrosionics	M170,175	Switchcraft 851	MH[]W4HH05[]L2	\$312.15
	M185,187 UM190,195,200,250,300	Switchcraft TA5F	MH[]W5HH05[]LS	\$318.15
	H185,187 UH190,195,200	Switchcraft A3M	MH[]W5HH05[]LX	\$312.15
Lightspeed	BP-200	Push lock type 4 pin	MH[]W5HH05[]LH	\$326.40
Micron	TX 501, 502	Lemo Fc2308	MH[]W5HH05[]MC	\$348.52
	TX 50X.X, TX 700	Lemo Fc2308	MH[]W5HH05[]MX	\$348.52
Mipro	TLV2221	Mipro 4 pin	MH[]W5HH05[]MN	\$324.65
Nady	410LT,900LT	Lemo 4 pin	MH[]W5HH05[]NL	\$324.65
	101LT,201LT,501LT	Switchcraft TA3F	MH[]W5HH05[]NS	\$318.15
	650LT,701LT,1200LT	Switchcraft TA3F	MH[]W5HH05[]NS	\$318.15
Ramsa	WX-RB300	Twist lock type 4 pin	MH[]W5HH05[]RH	\$340.65
Sabine	SW16T, SW30T	Sabine 4 pin	MH[]W5HH05[]SB	\$324.65
Samson	CT2,BT3,UT4, TX3 (Gray)	Hirose 6 pin	MH[]W5HH05[]SA	\$326.60
	UT5, TX3 (Black)	Hirose 6 pin	MH[]W5HH05[]SX	\$326.60
	CT3, VT2L	Switchcraft TA3F	MH[]W5HH05[]SV	\$318.15
Sennheiser	SK2012	Microdot	MH[]W3HH05[]SE	\$340.65
	SK-50, SK250	Lemo 3 pin	MH[]W3HH05[]S3	\$340.65
	SK-50, SK250 Padded 16dB	Lemo 3 pin	MH[]W3HH05[]SP	\$340.65
	BF1083	Lemo 1 pin	MH[]W3HH05[]S1	\$340.65
	SK 1090 Digital	3.5 mm plug	MH[]W3HH05[]SD	\$328.65
Shure	L-1, L-11,LX1,SC1,U1,UC1,T1,UT1	Switchcraft TA4F	MH[]W5HH05[]SL	\$318.15
	U1L	Lemo 4 pin	MH[]W5HH05[]SU	\$324.65
Sony	WRT-28, 420, 820	Twist lock type 4 pin	MH[]W5HH05[]SO	\$340.65
	WRT-805	Sony K1324 (3.5 mm)	MH[]W5HH05[]SN	\$328.65
Telex	WT50, 55, 60, 80, Prostar	Switchcraft TA4F	MH[]W5HH05[]TS	\$318.15
	WT 200, 400	Lemo 4 pin	MH[]W5HH05[]TL	\$324.65
	WT 450	Lemo 4 pin	MH[]W5HH05[]TT	\$324.65
Toa	WM370	Toa special 3.5 mm	MH[]W5HH05[]TO	\$310.15
Vega	77, 677	Lemo 4 pin	MH[]W5HH05[]VL	\$324.65
	T23, 25, 37, 93, PRO-2, 2020	Switchcraft TA4F	MH[]W5HH05[]VS	\$318.15
Xwire	X905	Switchcraft TA3F	MH[]W5HH05[]XW	\$318.15
Pigtail leads	Stripped and tinned	For 2 wire 10k ohm	MH[]W3HH05[]NC	\$298.65
Pigtail leads	Stripped and tinned	For 2 wire 2k ohm	MH[]W4HH05[]NC	\$298.65
Pigtail leads	Stripped and tinned	For 3 wire operation	MH[]W5HH05[]NC	\$298.65



MUSICAL INSTRUMENT MICROPHONES - Hardwired



Product Name	Part#	User
ISOMAX 2 O	M2OP6FF10	\$286.39

Applications: Best instrument mike for placing *inside* instruments. Inside placement gives you the best control of feedback and leakage from other instruments with a good overall sound.

Features: Very low distortion at the high sound levels encountered inside instruments with super flat frequency response for an uncolored, very clean sound. Phantom powered.

Supplied with: Basic clip, wind screen and storage case.



Product Name	Part#	User
ISOMAX 2 OG	M2OP6FF10	\$318.12

Applications: Designed for permanent placement inside instruments for best control of feedback and leakage from other instruments

Features: Very low distortion at the high sound levels encountered inside instruments with super flat frequency response for an uncolored, very clean sound. Phantom powered.

Supplied with: Mike prewired to 1/4" stereo end pin jack, ten foot cord with 1/4" plug, preamplifier and XLR3 plug.



Product Name	Part#	User
ISOMAX 2 H	M2HP6FF10	\$286.39

Applications: When natural sound balance with minimum EQ is more important than feedback and leakage control, placing a hypercardioid mike on the outside of the instrument is usually

Features: Very low distortion and super flat frequency response. The directional pattern rejects unwanted sounds over a much wider range of frequencies than other small mikes.

Supplied with: Basic clip, wind screen and storage case.

See Page 10 for ISOMAX 2 microphones for wireless transmitters.

How to specify ISOMAX 2 Hardwired options: M2 [] P [] FF [] — Cable length in feet
Stock lengths are 10' and 50'

Directional Pattern: O = Omni - for inside instruments
H = Hypercardioid - usually best for outside instruments
C = Cardioid - best rejection from directly behind mike
B = Bidirectional - best side rejection

Sensitivity: 4 = -40 dB low levels like choir mikes
6 = -60 dB for close miked instruments

ISOMAX 2 Instrument microphone accessories:

Product Name	Part#	User
ISO2 Basic clip (drums, strings, percussion)	A2CTIECLIP	\$17.70
ISO2 Flute Clip (flutes up to 3/4" in Dia.)	AC2FLUTE	\$15.85
ISO2 Guitar Clip (and inst. with center sound hole)	A2CGUIAR	\$15.85
ISO2 Sax Clip (and most brass horns)	A2CSAX	\$21.17
ISO2 Stage Mount (floor, lectern, tables, etc.)	A2CSM	\$21.17
ISO2 Wind Screen (1" round)	A2WS []	\$10.56

Color: B = Black, W = White, L = Light Beige

ISOMAX 2 INSTRUMENT MICROPHONES for WIRELESS

Brand	Model	Connector type	Part #	User
AKG	PT60,61,80,81	Switchcraft TA3F	M2[]W3HH05AK	\$274.06
	PT51,300,900	AKG B-LOC (3.5MM)	M2[]W3HH05AG	\$287.09
Audio Limited	TX2000, RMS-2000-mxl	Lemo 6 pin	M2[]W5FF05AL	\$296.56
Audio Technica	T27, 31, 35, 51	Hirose 4 pin	M2[]W5FF05AT	\$282.31
	T75	Hirose 4 pin	M2[]W5FF05AN	\$282.31
	PRO 88w/t	Special 3.5 mm plug	M2[]W5FF05AP	\$284.56
	ATW-U101	Switchcraft TA5F	M2[]W5FF05AW	\$274.06
Azden	41BT (UHF)	Hiroshi 4 pin	M2[]W5FF05ZU	\$282.31
	WM-PRO, WLT-PRO	Non locking 3.5 mm	M2[]W5FF05ZP	\$266.06
Beyer	TS600 and others	Beyer 4 pin	M2[]W5FF05BS	\$287.09
Comtek	M-72	Non locking 3.5 mm	M2[]W5FF05C3	\$268.06
	M-72	Switchcraft 851	M2[]W5FF05C2	\$268.06
	M-72	Switchcraft TA4M	M2[]W5FF05CS	\$274.06
	M-72	Lemo 4 pin	M2[]W5FF05CL	\$280.56
Electrovoice	MS-2000, MB2000A	Switchcraft TA4F	M2[]W5FF05EV	\$274.06
	MS-3000	Switchcraft TA4F	M2[]W5FF05ET	\$274.06
HME	TX-550, TX822	Switchcraft TA4F	M2[]W5FF05HS	\$274.06
Lectrosonics	M170,175	Switchcraft 851	M2[]W4FF05L2	\$268.06
	M185,187 UM190,195,200,250,300	Switchcraft TA5F	M2[]W5FF05LS	\$274.06
	H185,187 UH190,195,200	Switchcraft A3M	M2[]W5FF05LX	\$268.06
Lightspeed	BP-200	Push lock type 4 pin	M2[]W5FF05LH	\$282.31
Micron	TX 501, 502	Lemo Fc2308	M2[]W5FF05MC	\$304.43
	TX 50X.X, TX 700	Lemo Fc2308	M2[]W5FF05MX	\$304.43
Mipro	TLV2221	Mipro 4 pin	M2[]W5FF05MN	\$280.56
Nady	410LT,900LT	Lemo 4 pin	M2[]W5FF05NL	\$280.56
	101LT,201LT,501LT	Switchcraft TA3F	M2[]W5FF05NS	\$274.06
	650LT,701LT,1200LT	Switchcraft TA3F	M2[]W5FF05NS	\$274.06
Ramsa	WX-RB300	Twist lock type 4 pin	M2[]W5FF05RH	\$296.56
Sabine	SW16T, SW30T	Sabine 4 pin	M2[]W5FF05SB	\$280.56
Samson	CT2,BT3,UT4, TX3 (Gray)	Hirose 6 pin	M2[]W5FF05SA	\$282.51
	UT5, TX3 (Black)	Hirose 6 pin	M2[]W5FF05SX	\$282.51
	CT3, VT2L	Switchcraft TA3F	M2[]W5FF05SV	\$274.06
Sennheiser	SK2012	Microdot	M2[]W3FF05SE	\$296.56
	SK-50, SK250	Lemo 3 pin	M2[]W3FF05S3	\$296.56
	SK-50, SK250 Padded 16dB	Lemo 3 pin	M2[]W3FF05SP	\$296.56
	BF1083	Lemo 1 pin	M2[]W3FF05S1	\$296.56
	SK 1090 Digital	3.5 mm plug	M2[]W3FF05SD	\$284.56
Shure	L-1, L-11,LX1,SC1,U1,UC1,T1,UT1	Switchcraft TA4F	M2[]W5FF05SL	\$274.06
	U1L	Lemo 4 pin	M2[]W5FF05SU	\$280.56
Sony	WRT-28, 420, 820	Twist lock type 4 pin	M2[]W5FF05SO	\$296.56
	WRT-805	Sony K1324 (3.5 mm)	M2[]W5FF05SN	\$284.56
Telex	WT50, 55, 60, 80, Prostar	Switchcraft TA4F	M2[]W5FF05TS	\$274.06
	WT 200, 400	Lemo 4 pin	M2[]W5FF05TL	\$280.56
	WT 450	Lemo 4 pin	M2[]W5FF05TT	\$280.56
Toa	WM370	Toa special 3.5 mm	M2[]W4FF05TO	\$266.06
Vega	77, 677	Lemo 4 pin	M2[]W5FF05VL	\$280.56
	T23, 25, 37, 93, PRO-2, 2020	Switchcraft TA4F	M2[]W5FF05VS	\$274.06
Xwire	X905	Switchcraft TA3F	M2[]W5FF05XW	\$274.06
Pigtail leads	Stripped and tinned	For 2 wire 10k ohm	M2[]W3FF05NC	\$254.56
Pigtail leads	Stripped and tinned	For 2 wire 2k ohm	M2[]W4FF05NC	\$254.56
Pigtail leads	Stripped and tinned	For 3 wire operation	M2[]W5FF05NC	\$254.56

How to specify ISOMAX 2 for wireless options: M2 [] [] FF []

Directional Pattern: O = Omni - for inside instruments
 H = Hypercardioid - usually best for outside instruments
 C = Cardioid - best rejection from directly behind mike
 B = Bidirectional - best side rejection

Insert connector code for your transmitter

Insert microphone type for your transmitter